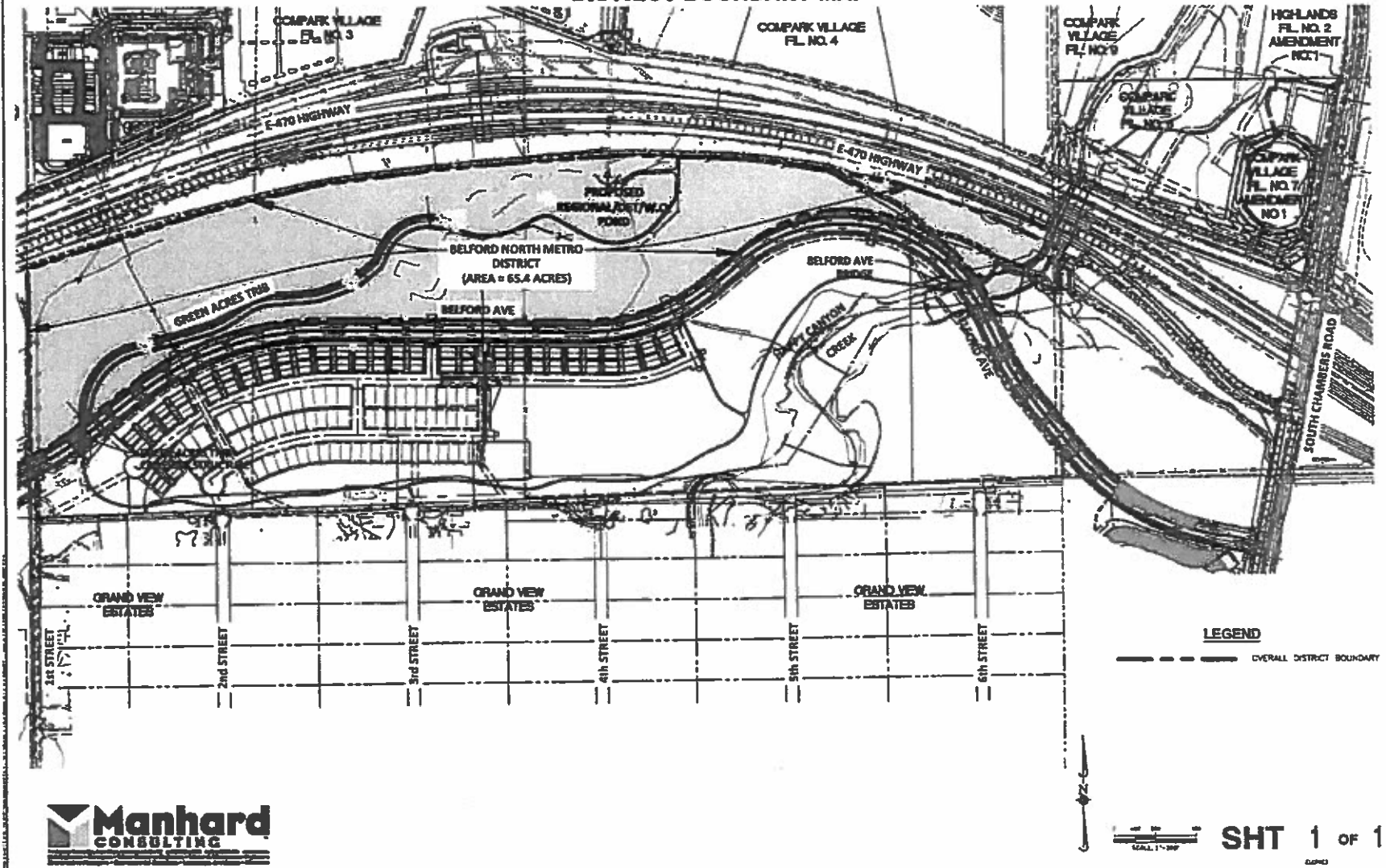


### EXHIBIT C-1 BELFORD NORTH METROPOLITAN DISTRICT DISTRICT BOUNDARY MAP



LEGEND  
 - - - - - OVERALL DISTRICT BOUNDARY

SHT 1 OF 1  
 SCALE 1" = 50'

RECEIVED  
 APR 19 2018  
 Div of Local Government

RECEIVED

APR 19 2018

Div of Local Government

# EXHIBIT A

BELFORD NORTH METROPOLITAN DISTRICT

LGID NO. \_\_\_\_\_

## LEGAL DESCRIPTION - BOUNDARY PARCEL

PART OF THE SOUTH HALF OF SECTION 6, TOWNSHIP 6 SOUTH, RANGE 66 WEST OF THE SIXTH PRINCIPAL MERIDIAN, COUNTY OF DOUGLAS, STATE OF COLORADO, BEING MORE PARTICULARLY DESCRIBED AS FOLLOWS:

COMMENCING AT THE SOUTHWEST CORNER OF SAID SECTION 6 AND CONSIDERING THE WEST LINE OF THE SOUTHWEST QUARTER OF SAID SECTION 6 TO BEAR NORTH 00°30'14" WEST, AND MONUMENTED AS SHOWN HEREON, WITH ALL BEARINGS CONTAINED HEREIN RELATIVE THERETO;

THENCE NORTH 00°30'14" WEST, A DISTANCE OF 295.45 FEET TO THE POINT OF BEGINNING;

THENCE NORTH 00°30'14" WEST, A DISTANCE OF 920.99 FEET TO A POINT ON THE SOUTHERLY RIGHT-OF-WAY LINE OF HIGHWAY E-470 AS DESCRIBED IN BOOK 902 AT PAGE 573 AND AT BOOK 902 AT PAGE 576 OF THE RECORDS OF THE DOUGLAS COUNTY CLERK AND RECORDER;

THENCE ALONG SAID SOUTHERLY RIGHT-OF-WAY LINE THE FOLLOWING TEN (10) COURSES:

- 1) THENCE NORTH 72°48'01" EAST, A DISTANCE OF 328.41 FEET;
- 2) THENCE NORTH 73°02'20" EAST, A DISTANCE OF 596.76 FEET;
- 3) THENCE NORTH 77°03'02" EAST, A DISTANCE OF 576.89 FEET;
- 4) THENCE NORTH 83°04'45" EAST, A DISTANCE OF 573.61 FEET;
- 5) THENCE NORTH 85°05'07" EAST, A DISTANCE OF 380.93 FEET;
- 6) THENCE NORTH 86°06'18" EAST, A DISTANCE OF 574.74 FEET;
- 7) THENCE SOUTH 87°52'51" EAST, A DISTANCE OF 578.89 FEET;
- 8) THENCE SOUTH 81°41'15" EAST, A DISTANCE OF 612.23 FEET;
- 9) THENCE SOUTH 72°31'23" EAST, A DISTANCE OF 371.41 FEET TO A POINT ON A CURVE;
- 10) ALONG A NON-TANGENT CURVE TO THE RIGHT HAVING A CENTRAL ANGLE OF 10°57'27", A RADIUS OF 3005.03 FEET, AN ARC LENGTH OF 574.70 FEET, THE CHORD OF WHICH BEARS SOUTH 67°01'44" EAST, A DISTANCE OF 573.82 FEET;

THENCE SOUTH 21°56'14" WEST, A DISTANCE OF 91.83 FEET TO A POINT OF CURVATURE;

THENCE ALONG THE ARC OF A TANGENT CURVE TO THE RIGHT HAVING A CENTRAL ANGLE OF 43°58'01", A RADIUS OF 200.00 FEET, AN ARC LENGTH OF 153.47 FEET, THE CHORD OF WHICH BEARS SOUTH 43°55'15" WEST, A DISTANCE OF 149.74 FEET TO A POINT OF TANGENCY;

THENCE SOUTH 65°54'15" WEST, A DISTANCE OF 75.57 FEET TO A POINT OF CURVATURE;

THENCE ALONG THE ARC OF A TANGENT CURVE TO THE RIGHT HAVING A CENTRAL ANGLE OF 24°33'38", A RADIUS OF 200.00 FEET, AN ARC LENGTH OF 85.73 FEET, THE CHORD OF WHICH BEARS SOUTH 78°11'04" WEST, A DISTANCE OF 85.08 FEET TO A POINT OF TANGENCY;

THENCE NORTH 89°32'07" WEST, A DISTANCE OF 9.07 FEET TO A POINT OF CURVATURE;

THENCE ALONG THE ARC OF A TANGENT CURVE TO THE LEFT HAVING A CENTRAL ANGLE OF 09°04'32", A RADIUS OF 200.00 FEET, AN ARC LENGTH OF 31.68 FEET, THE CHORD OF WHICH BEARS SOUTH 85°55'38" WEST, A DISTANCE OF 31.65 FEET TO A NON-TANGENT CURVE;

THENCE ALONG THE ARC OF A NON-TANGENT CURVE TO THE LEFT HAVING A CENTRAL ANGLE OF 100°04'23", A RADIUS OF 825.00 FEET, AN ARC LENGTH OF 1440.94 FEET, THE CHORD OF WHICH BEARS NORTH 80°09'16" WEST, A DISTANCE OF 1264.64 FEET TO A POINT OF TANGENCY;

Dwg Name: P:\Circle3\ComSouth06-District-Formation\dwg\Surveys\Exhibits\Surveys\00C.LCPKC3.06-51.3.dwg Updated By: BPfchl 6/29/2017 12:43 PM



8008 E. Arapahoe Court, Suite 110, Centennial, CO 80112 ph:303.708.0600 tx:303.708.0400 manhard.com  
Civil Engineers • Surveyors • Water Resources Engineers • Water & Wastewater Engineers  
Construction Managers • Environmental Scientists • Landscape Architects • Planners

BELFORD NORTH METROPOLITAN DISTRICT  
TOWN OF PARKER, DOUGLAS COUNTY, COLORADO  
DISTRICT FORMATION

PROJ. MGR.: BJP  
DRAWN BY: GDP  
DATE: 06/29/17  
SCALE: N/A

SHEET  
**1** OF **5**  
00C.LCPKC3.06

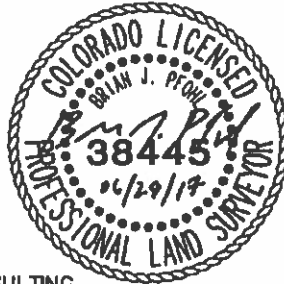
# EXHIBIT A

BELFORD NORTH METROPOLITAN DISTRICT  
LGID NO. \_\_\_\_\_

## LEGAL DESCRIPTION (CONTINUED...)

THENCE SOUTH 49°48'33" WEST, A DISTANCE OF 161.42 FEET TO A POINT OF CURVATURE;  
THENCE ALONG THE ARC OF A TANGENT CURVE TO THE RIGHT HAVING A CENTRAL ANGLE OF 40°40'50", A RADIUS OF 945.00 FEET, AN ARC LENGTH OF 670.96 FEET, THE CHORD OF WHICH BEARS SOUTH 70°08'58" WEST, A DISTANCE OF 656.95 FEET TO A POINT OF TANGENCY;  
THENCE NORTH 89°30'37" WEST, A DISTANCE OF 1246.68 FEET TO A POINT OF CURVATURE;  
THENCE ALONG THE ARC OF A TANGENT CURVE TO THE LEFT HAVING A CENTRAL ANGLE OF 37°49'41", A RADIUS OF 1555.00 FEET, AN ARC LENGTH OF 1026.65 FEET, THE CHORD OF WHICH BEARS SOUTH 71°34'32" WEST, A DISTANCE OF 1008.11 FEET TO A POINT OF TANGENCY;  
THENCE SOUTH 52°39'42" WEST, A DISTANCE OF 347.52 FEET TO A POINT OF CURVATURE;  
THENCE ALONG THE ARC OF A TANGENT CURVE TO THE RIGHT HAVING A CENTRAL ANGLE OF 10°46'25", A RADIUS OF 1445.00 FEET, AN ARC LENGTH OF 271.71 FEET, THE CHORD OF WHICH BEARS SOUTH 58°02'54" WEST, A DISTANCE OF 271.31 FEET TO THE POINT OF BEGINNING;  
CONTAINING A CALCULATED AREA OF 2,852,451 SQUARE FEET OR 65.4833 ACRES, MORE OR LESS.

I, BRIAN J. PFOHL, A SURVEYOR LICENSED IN THE STATE OF COLORADO, DO HEREBY CERTIFY THAT THE ABOVE LEGAL DESCRIPTION AND ATTACHED EXHIBIT WERE PREPARED BY ME OR UNDER MY DIRECT SUPERVISION AND CHECKING.



BRIAN J. PFOHL, P.L.S. 38445  
FOR AND ON BEHALF OF MANHARD CONSULTING



8008 E. Arapahoe Court, Suite 110, Centennial, CO 80119 ph:303 708 0000 fx:303 708 0400 manhard.com  
Civil Engineers • Surveyors • Water Resource Engineers • Water & Wastewater Engineers  
Construction Managers • Environmental Scientists • Landscape Architects • Planners

BELFORD NORTH METROPOLITAN DISTRICT  
TOWN OF PARKER, DOUGLAS COUNTY, COLORADO  
DISTRICT FORMATION

PROJ. MGR.: BJP  
DRAWN BY: GDP  
DATE: 08/26/17  
SCALE: N/A

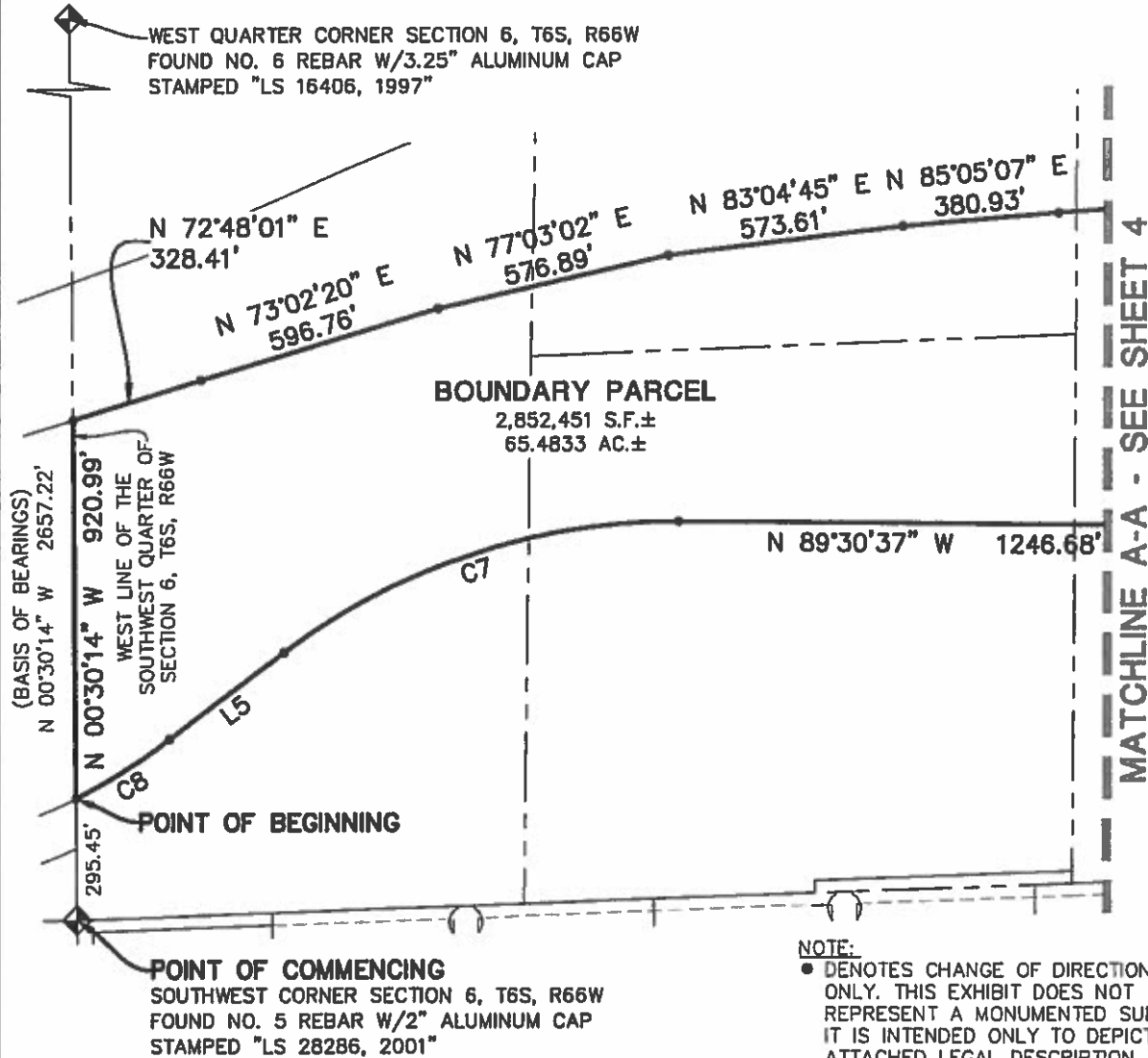
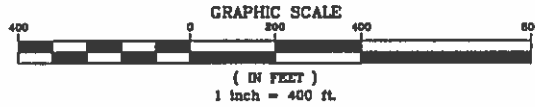
SHEET  
**2** OF **5**  
00C.LCPKC3.08

5/29/2017 12:43 PM D:\C:\p\3\Gem\South06-District Formation\and\Sur\A\F\outputs\Sur\00C.LCPKC3.08-S1.dwg Updated By: B.Pfohl

# EXHIBIT A

BELFORD NORTH METROPOLITAN DISTRICT

LGID NO. \_\_\_\_\_



MATCHLINE A-A - SEE SHEET 4

(BASIS OF BEARINGS)  
N 00°30'14" W 2657.22'

WEST LINE OF THE  
SOUTHWEST QUARTER OF  
SECTION 6, T6S, R66W

**POINT OF COMMENCING**  
SOUTHWEST CORNER SECTION 6, T6S, R66W  
FOUND NO. 5 REBAR W/2" ALUMINUM CAP  
STAMPED "LS 28286, 2001"

**NOTE:**  
• DENOTES CHANGE OF DIRECTION ONLY. THIS EXHIBIT DOES NOT REPRESENT A MONUMENTED SURVEY. IT IS INTENDED ONLY TO DEPICT THE ATTACHED LEGAL DESCRIPTION.

SEE SHEET 5 FOR LINE AND CURVE TABLES

8008 E. Arapahoe Court, Suite 110, Centennial, CO 80112 ph:303.708.0800 tc:303.708.0400 manhard.com  
Civil Engineers • Surveyors • Water Resource Engineers • Water & Wastewater Engineers  
Construction Managers • Environmental Scientists • Landscape Architects • Planners

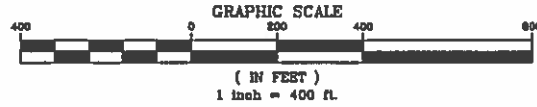
BELFORD NORTH METROPOLITAN DISTRICT		TOWN OF PARKER, DOUGLAS COUNTY, COLORADO	
DISTRICT FORMATION			
PROJ. MGR.:	BJP	SHEET	
DRAWN BY:	BJP	3 OF 5	
DATE:	05/29/17	00C.LCPKC3.08	
SCALE:	1" = 400'		

Dwg Name: P:\Circle3\Com\South06-District Formation\dwg\Surveys\Exhibits\_Survey\00C.LCPKC3.08-S1.dwg Updated By: B.P.fghl 5/29/2017 12:43 PM

# EXHIBIT A

BELFORD NORTH METROPOLITAN DISTRICT

LGID NO. \_\_\_\_\_



MATCHLINE A-A - SEE SHEET 3

N 86°06'18" E  
574.74'

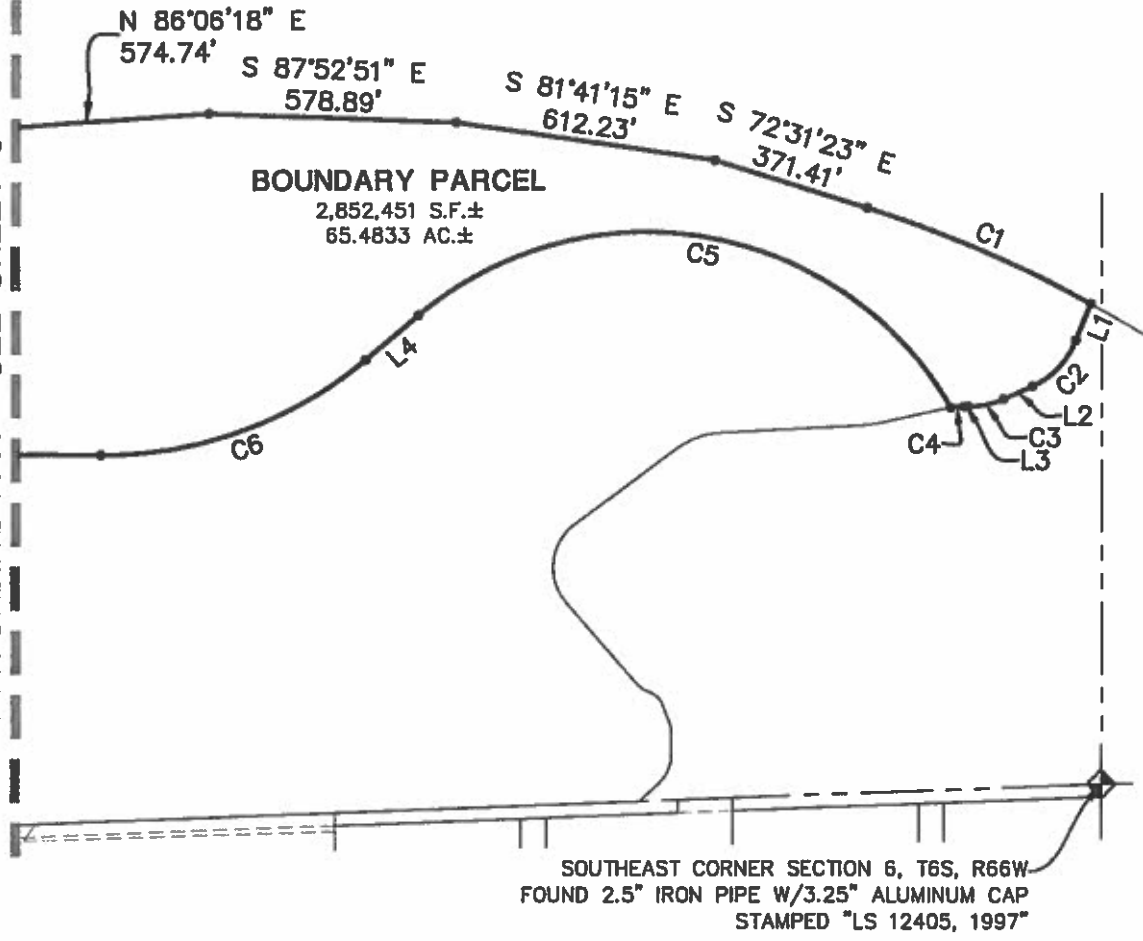
S 87°52'51" E  
578.89'

S 81°41'15" E  
612.23'

S 72°31'23" E  
371.41'

**BOUNDARY PARCEL**

2,852,451 S.F.±  
65.4833 AC.±



SOUTHEAST CORNER SECTION 6, T6S, R66W  
FOUND 2.5" IRON PIPE W/3.25" ALUMINUM CAP  
STAMPED "LS 12405, 1997"

**NOTE:**

- DENOTES CHANGE OF DIRECTION ONLY. THIS EXHIBIT DOES NOT REPRESENT A MONUMENTED SURVEY. IT IS INTENDED ONLY TO DEPICT THE ATTACHED LEGAL DESCRIPTION.

SEE SHEET 5 FOR LINE AND CURVE TABLES

BELFORD NORTH METROPOLITAN DISTRICT

TOWN OF PARKER, DOUGLAS COUNTY, COLORADO

DISTRICT FORMATION



8008 E Arapahoe Court, Suite 110, Centennial, CO 80112 ph:303.708.0600 fx:303.708.0400 manhard.com  
 Civil Engineers • Surveyors • Water Resources Engineers • Water & Wastewater Engineers  
 Construction Managers • Environmental Scientists • Landscape Architects • Planners

PROJ. MGR.: BJP  
 DRAWN BY: BJP  
 DATE: 06/29/17  
 SCALE: 1" = 400'

SHEET  
**4** OF **5**  
 00C.LCPKC3.08

6/29/2017 12:43 PM Dwg Name: P:\Clicke3\Com\South05-District\_Formation\dwg\Sur\Exhibits\_Surv\00C.LCPKC3.08-SL3.dwg Updated By: BPfohl

# EXHIBIT A

BELFORD NORTH METROPOLITAN DISTRICT  
 LGID NO. \_\_\_\_\_

LINE TABLE		
LINE	BEARING	LENGTH
L1	S 21°56'14" W	91.83'
L2	S 65°54'15" W	75.57'
L3	N 89°32'07" W	9.07'
L4	S 49°48'33" W	161.42'
L5	S 52°39'42" W	347.52'

CURVE TABLE					
CURVE	DELTA	RADIUS	LENGTH	CHORD BEARING	CHORD
C1	10°57'27"	3005.03'	574.70'	S 67°01'44" E	573.82'
C2	43°58'01"	200.00'	153.47'	S 43°55'15" W	149.74'
C3	24°33'38"	200.00'	85.73'	S 78°11'04" W	85.08'
C4	9°04'32"	200.00'	31.68'	S 85°55'38" W	31.65'
C5	100°04'23"	825.00'	1440.94'	N 80°09'16" W	1264.64'
C6	40°40'50"	945.00'	670.96'	S 70°08'58" W	656.95'
C7	37°49'41"	1555.00'	1026.65'	S 71°34'32" W	1008.11'
C8	10°46'25"	1445.00'	271.71'	S 58°02'54" W	271.31'

6/29/2017 12:43 PM Dwg Name: P:\Cipke\3\ComSouth06-District Formation\dwg\Surv\Exhibits\_Surv\00C.LCPKC3.06-SI.3.dwg Updated By: B.Pfohl



8008 E. Arapahoe Court, Suite 110, Centennial, CO 80112 ph:303.708.0800 ec:303.708.0400 manhard.com  
 Civil Engineers • Surveyors • Water Resources Engineers • Water & Wastewater Engineers  
 Construction Managers • Environmental Scientists • Landscape Architects • Planners

BELFORD NORTH METROPOLITAN DISTRICT  
 TOWN OF PARKER, DOUGLAS COUNTY, COLORADO

DISTRICT FORMATION

PROJ. MGR.: BJP  
 DRAWN BY: BJP  
 DATE: 06/29/17  
 SCALE: N/A

SHEET  
**5** OF **5**  
 00C.LCPKC3.06